



National Association of Women Judges District 14

The Honorable Tamila E. Ipema
NAWJ Director, District 14 (California and Nevada)



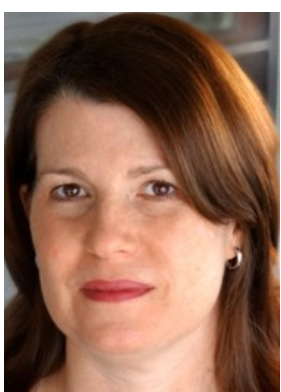
E-BLAST

SEPTEMBER 2015

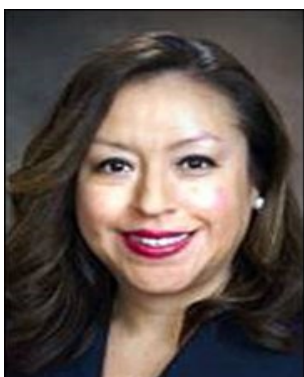
WELCOME NEW MEMBERS!



The Honorable Halim Dhanidina was appointed to Los Angeles Superior Court in 2012 by Governor Jerry Brown. Judge Dhanidina presides over criminal matters. **Welcome to NAWJ Judge Dhanidina.**



The Honorable Marian Fitzgerald Gaston was appointed to San Diego Superior Court in April 2015 by Governor Jerry Brown. Judge Gaston currently presides over misdemeanor arraignments. **Welcome to NAWJ Judge Gaston.**



The Honorable Lillian Vega Jacobs was appointed to the Los Angeles Superior Court by Governor Jerry Brown in 2014. Judge Vega Jacobs presides over criminal matters. **Welcome to NAWJ Judge Jacobs.**



The Honorable Peter L. Fagan was appointed as a court commissioner for Contra Costa Superior Court in April 2015. Commissioner Fagan hears traffic, small claims and Unlawful Detainer matters. **Welcome to NAWJ Commissioner Fagan.**



The Honorable Julianna Sylva is a judge of the Santa Clara County Superior Court. Judge Sylva was elected in 2014. She is currently in a Domestic Violence Restraining Order assignment. **Welcome to NAWJ Judge Sylva.**



Ms. Lori E. Andrus is an attorney at law at Andrus Anderson LLP in San Francisco, California. She specializes in mass torts and personal injury cases, as well as consumer protection and employee rights cases. **Welcome to NAWJ Ms. Andrus.**



The Honorable Gassia Apkarian was appointed to Orange County Superior Court in November, 2014, by Governor Jerry Brown. Judge Apkarian presides over criminal matters. **Welcome to NAWJ Judge Apkarian.**



The Honorable Danielle K. Douglas is a judge of the Contra Costa Superior Court. Judge Douglas was appointed by Governor Jerry Brown in 2014. **Welcome to NAWJ Judge Douglas.**



The Honorable Stephanie E. Hulseley was elected to the Monterey County Superior Court in June 2014. Judge Hulseley is currently assigned to the Misdemeanor Trial Department. **Welcome to NAWJ Judge Hulseley.**



The Honorable Sean P. Lafferty was elected to Riverside County Superior Court in 2014. Judge Lafferty is currently presiding over misdemeanor arraignments. **Welcome to NAWJ Judge Lafferty.**



The Honorable Lisa R. Rodriguez was appointed to the San Diego Superior Court in 2015 by Governor Jerry Brown. Judge Rodriguez is currently in a criminal assignment. **Welcome to NAWJ Judge Rodrigues.**

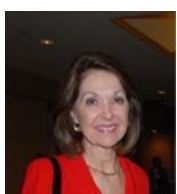


Ms. Amrit Vaani Chawla is an attorney-at-law at Chawla Law Group in San Diego, CA. Ms. Chawla is an immigration attorney who has been representing individuals and corporations since 1994. **Welcome to NAWJ Ms. Vanni.**

District 14 Chairs

The Honorable Tamila E. Ipema thanks the assistance of the District 14 chairs for gathering news from their respective regions!

Please email Tamila.Ipema@sdcourts.ca.gov, or your District 14 Chairs, with any news (Awards, Retirements, Accomplishments, Promotions, etc.) about the NAWJ Members in your area and we will make sure it gets into our next edition of the E-Blast.



Hon. Jamoa Moberly
Orange County
jmoberly@occourts.org



Hon. Marguerite D. Downing
Los Angeles
mdowning@lasuperiorcourt.org



Hon. Elizabeth Lee
Northern California
eklee@sanmateocourt.org



Hon. Patricia Lynch
Nevada
plunch@washoecounty.us