



# UPSTREAM

## CHILD WELFARE MAPPING IN MASSACHUSETTS

*National Association of Women Judges • November 9<sup>th</sup>, 2021*

**Shana Cashman, Esq.**

Child Welfare Project Manager

Administrative Office of the Juvenile Court

**Chief Justice Amy Nechem**

Juvenile Court

Massachusetts Trial Court


**Marisa Hebble, MPH**

Community Justice Project Manager

Executive Office of the Trial Court

# WELCOME

Chief Justice Amy L. Nechtem



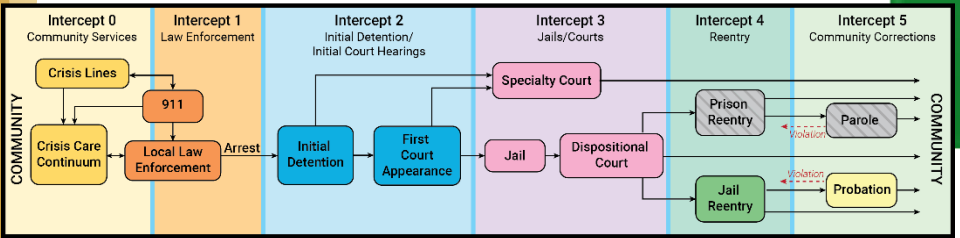
*“There comes a point where we need to stop just pulling people out of the river. We need to go **upstream** and find out why they're falling in.”*

*~ Desmond Tutu*

# Mapping Project Development



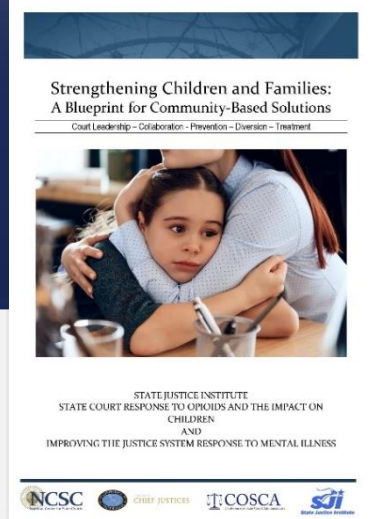
*Pathways Initiative*  
 Administrative  
 Office of the  
 Juvenile Court



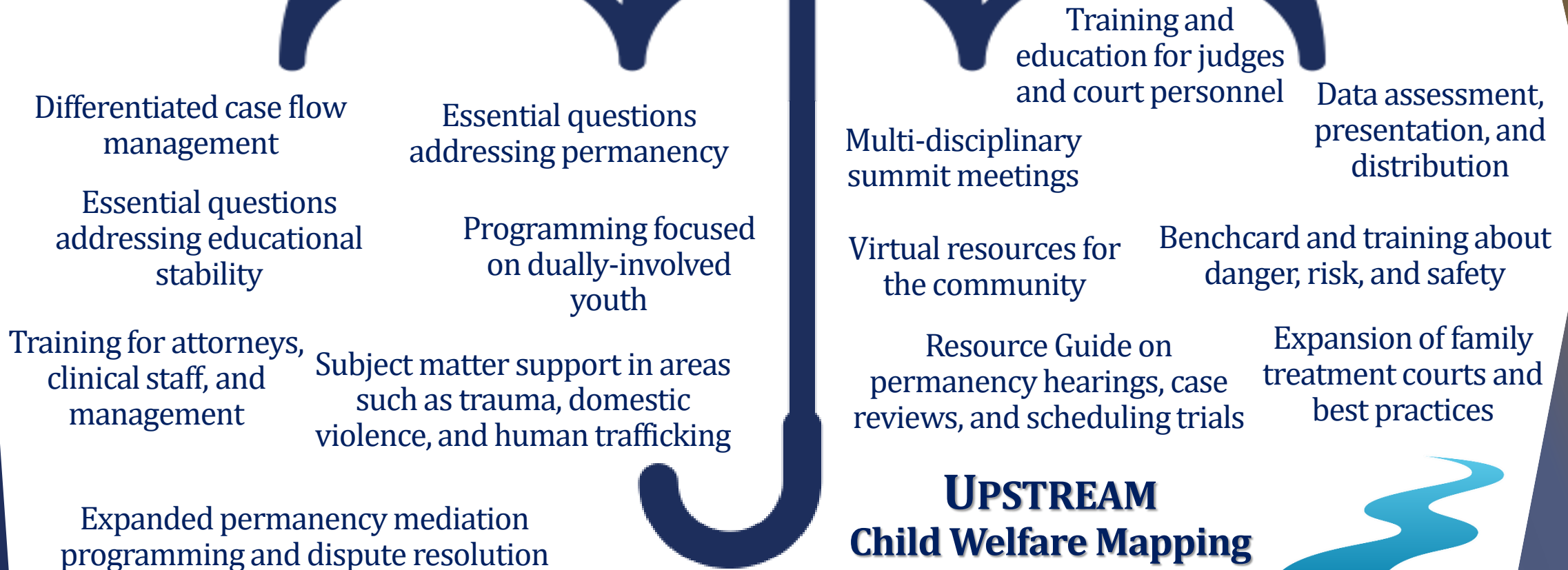
Massachusetts  
 Community Justice  
 Project  
 Executive Office of  
 the Trial Court

National Center for  
 State Courts  
 Casey Family  
 Programs

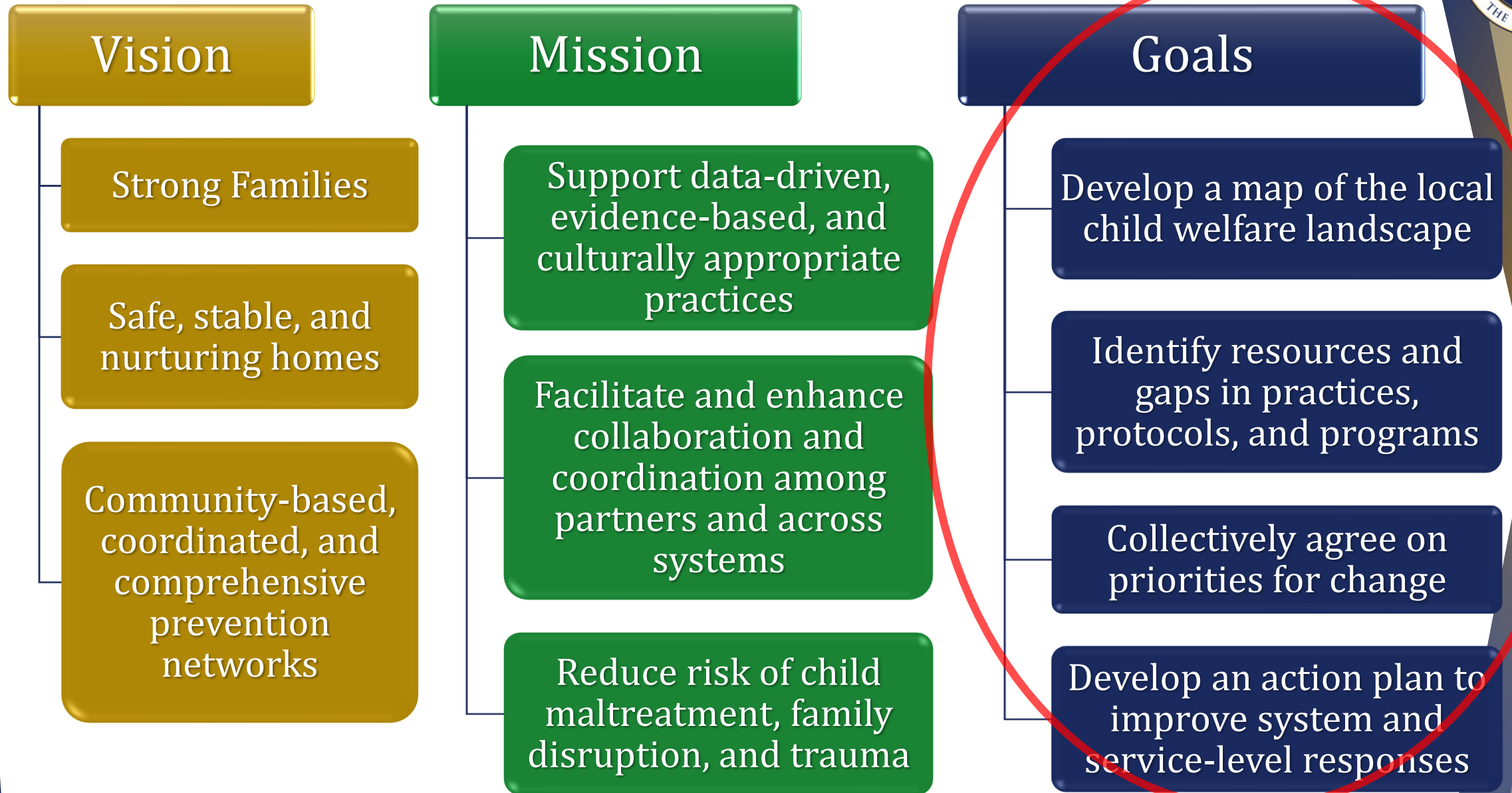
UPSTREAM  
 Child Welfare  
 Mapping



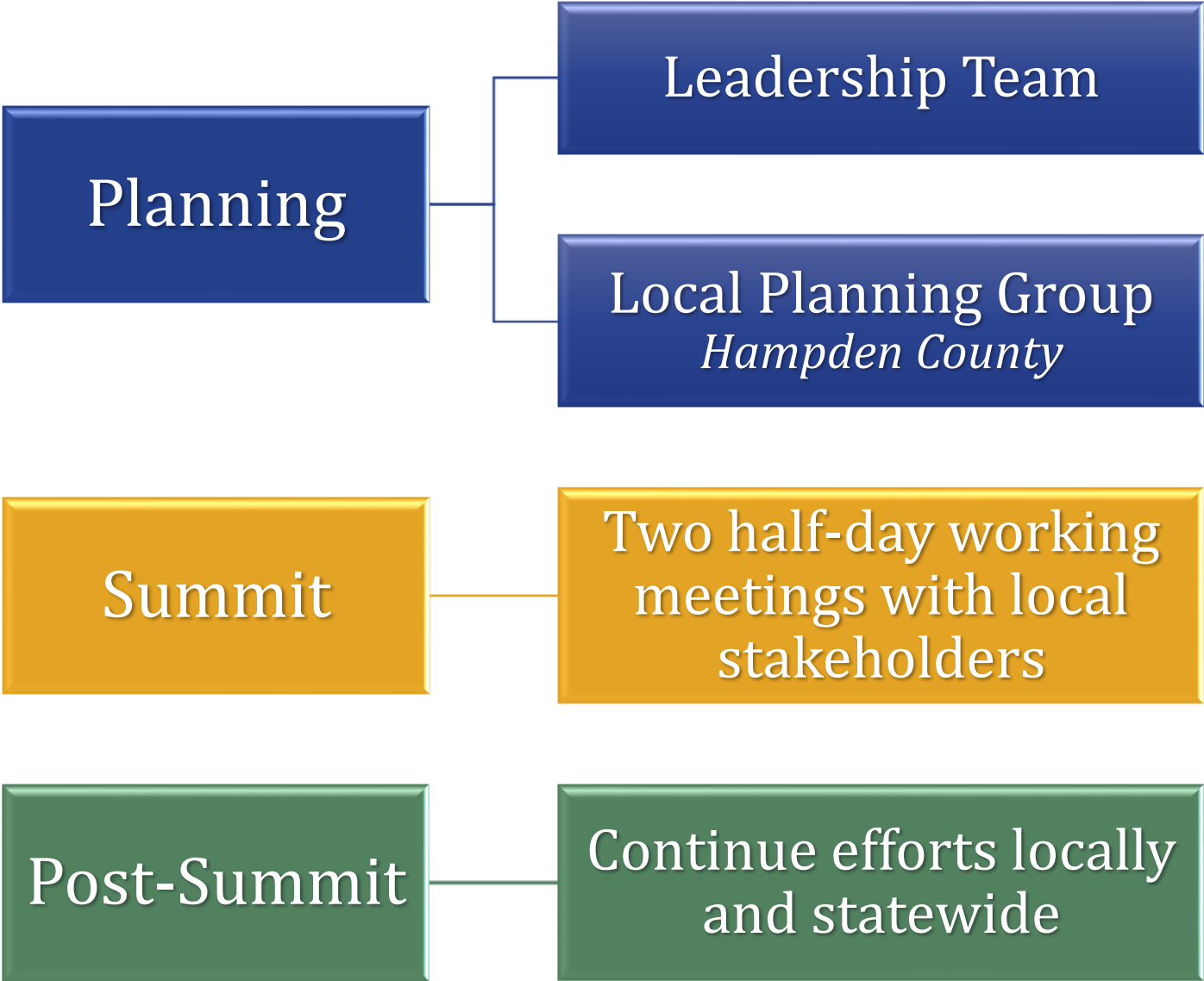
# MA Juvenile Court: Pathways Initiative



# Child Welfare Mapping in Massachusetts



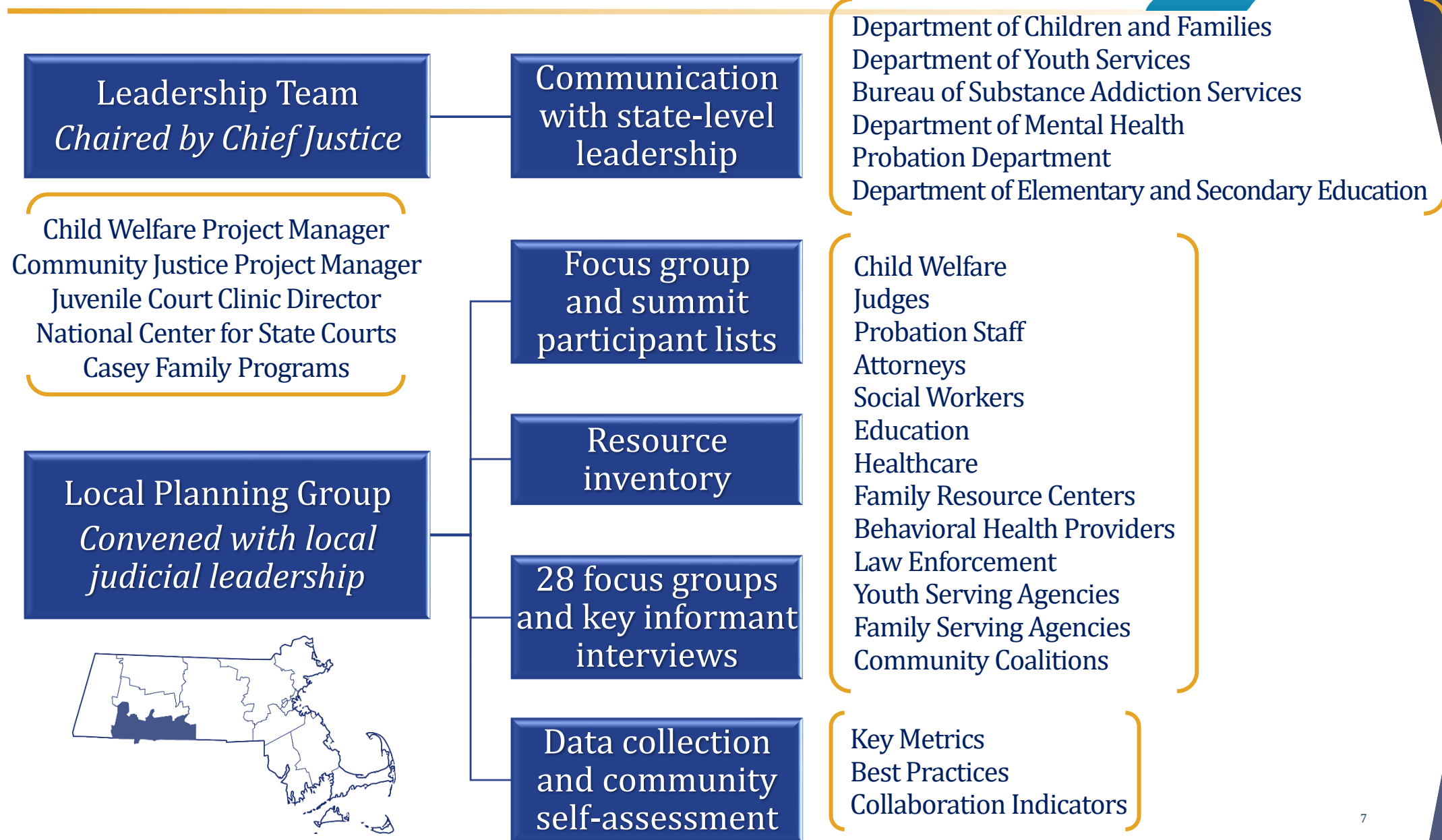
# Mapping Phases



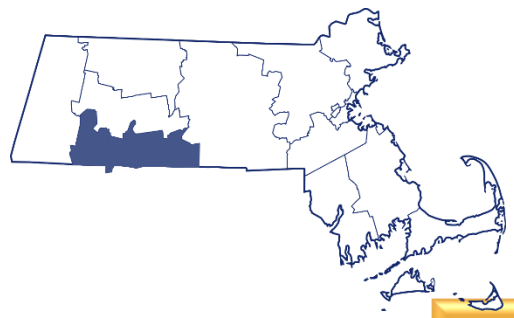
*Trial Court Staffing  
Child Welfare Project Manager  
Community Justice Project Manager  
Administrative Coordinator*



# Planning



# Summit



Day 1

Shared values

Review of Risk and Protective Factors

State and local data

Child Welfare Landscape

Key Gaps from Focus Groups

Two half-day working meetings with 67 local stakeholders

Behavioral Health Treatment

Clerks

Probation

Child Welfare

Youth and Family Serving Agencies

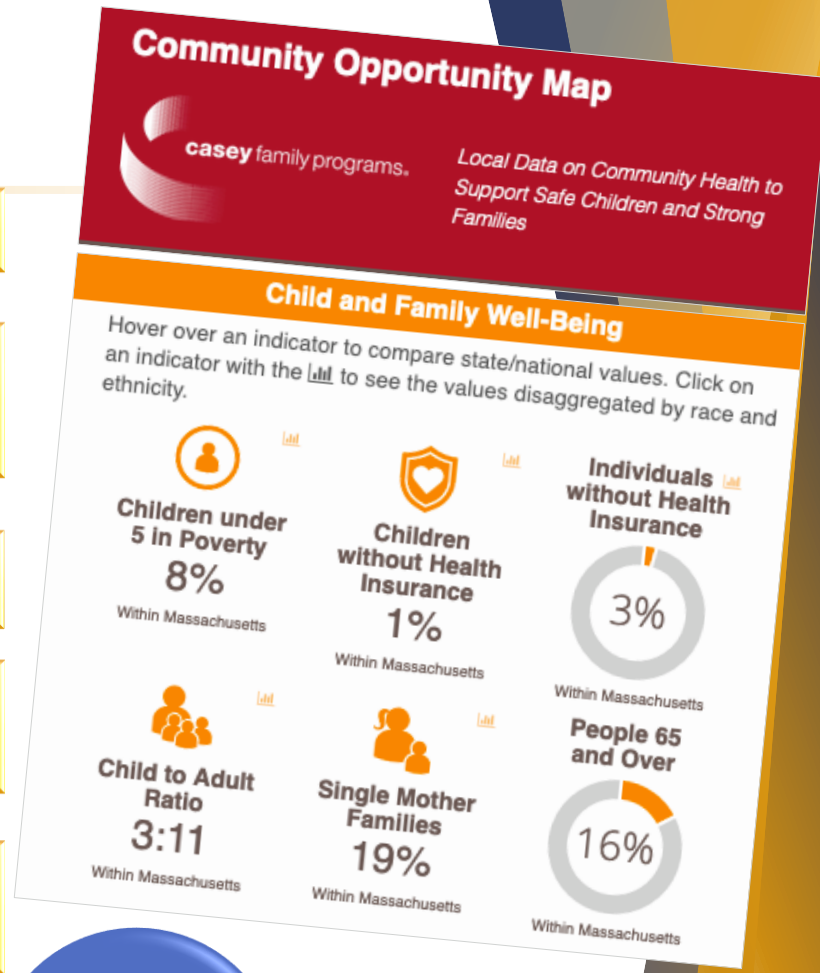
Judges

State Agencies

Education and Childcare

Healthcare

Attorneys and Justice Partners



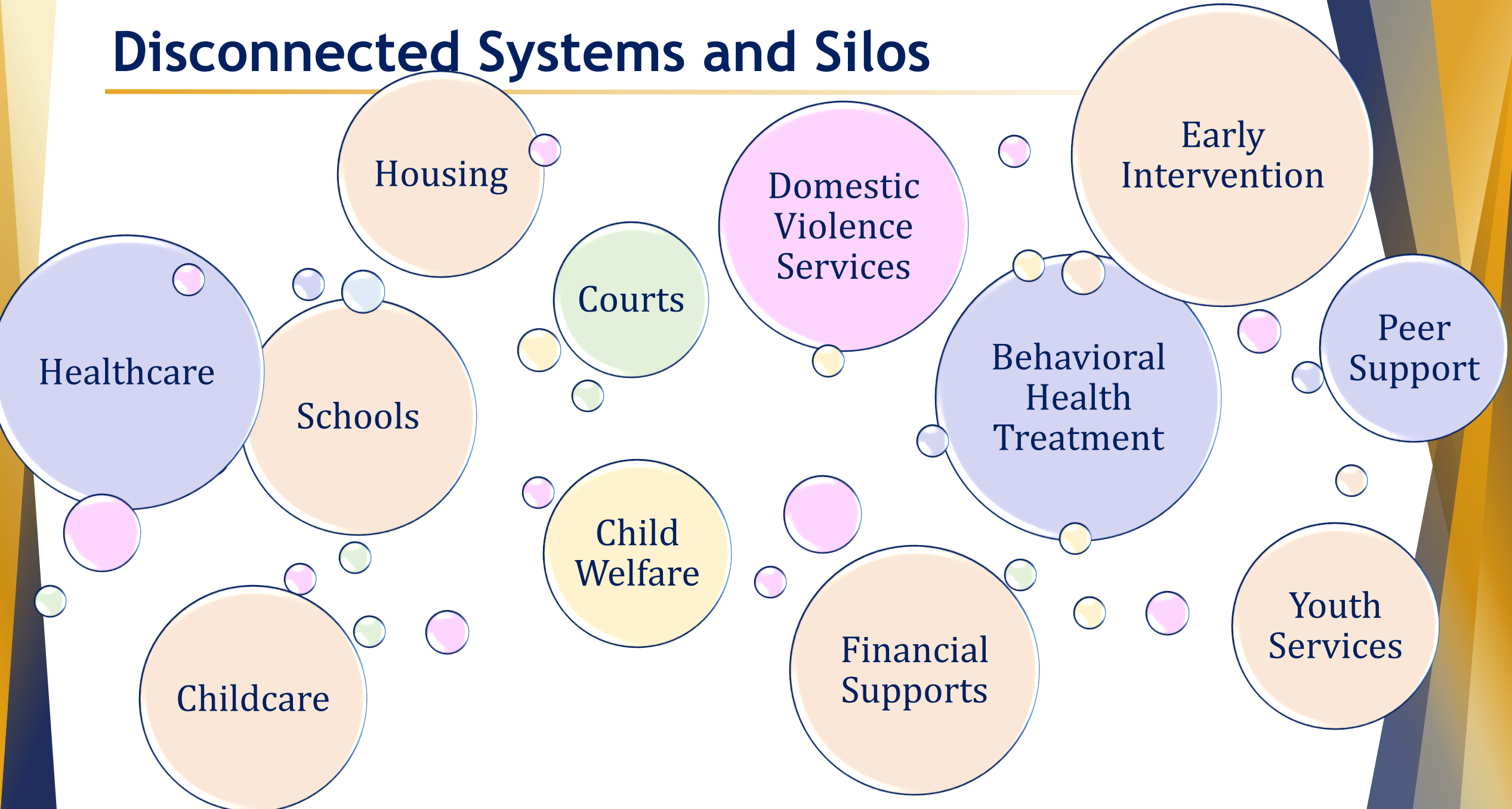




# *CHILD WELFARE LANDSCAPE*

Framework for Resource and Cross-Systems Mapping

# Disconnected Systems and Silos



# Child Welfare Landscape

## Secondary Prevention

*Selective: At risk due to personal, family, or community factor(s)*

## Intervention

*Indicated: Displaying detectable signs or symptoms of child maltreatment behavior or are at very high risk*

## Crisis Intervention

## Child Welfare

*Treatment: Perpetrating child maltreatment; halt behavior and advance healing for victims*

## Court

## Aftercare

*Indicated: Detectable signs or at very high risk*

## Primary Prevention

*Universal: Entire population regardless of level of risk*

## Cross-Systems Collaboration

*Collective Impact*

# Child Welfare Landscape

## Secondary Prevention

Enhanced Primary Care

Behavioral Parent Training

Treatment to lessen harms of abuse and neglect exposure

Treatment to prevent problem behavior and future involvement in violence

Victim-centered services

Family-centered treatment for behavioral health needs

Elevated and in-risk care coordination, services, and supports

## Intervention

Emergency Medical Services

Law Enforcement

Emergency Services Program (crisis)

Emergency Department

Emergency Shelter

Domestic Violence Service

Acute behavioral health treatment

Emergency Guardianship

Civil Commitment for behavioral health issues

Eviction

## Crisis Intervention

## Child Welfare

Referral

Screening

Assessment and Investigation

Services and Treatment

Referral to Court

## Court

Petition and Filing

*Pathways*  
Differentiated Case Flow Management

Adjudication and Disposition

## Aftercare

Linkages to Community Services

Reentry Prevention

Safety Planning

## Primary Prevention

Economic Supports

Social Norms to Support Parents and Positive Parenting

Quality Healthcare

Quality Childcare and Education

Parenting Skills to Promote Healthy Child Development

Youth Connections to Caring Adults and Activities

## Cross-Systems Collaboration

Coalitions, Task Forces  
Coordinating Councils

Information sharing and care coordination

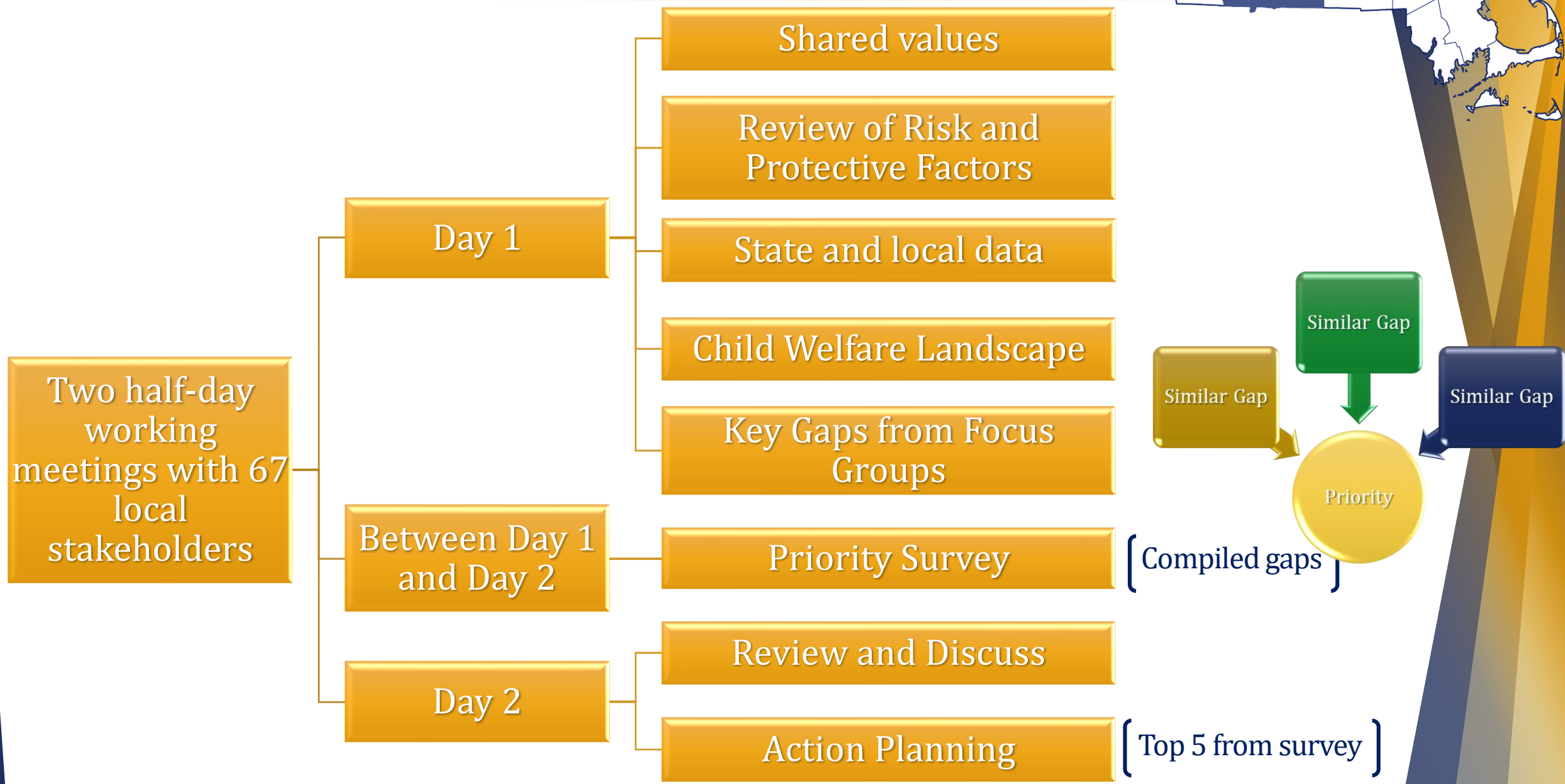
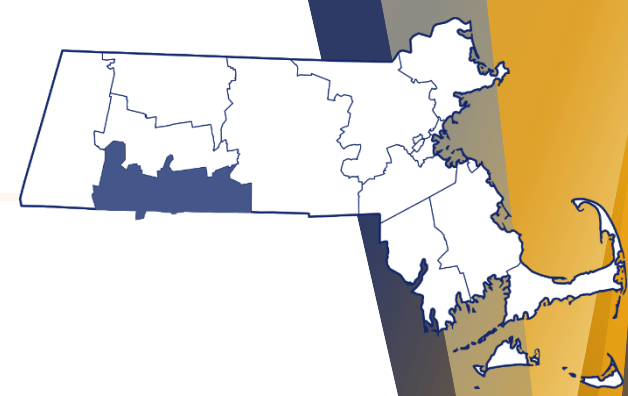
Data collection, analysis, and sharing

Cross-training

Co-located and integrated services

Shared funding

# Summit



# Priorities for Change

Efficient and coordinated prevention and service network

Cross-systems care coordination and support for children and parents: pre-filing; after resolution; during and after reunification

Training and education across sectors: working with vulnerable children and families and related topics

Programs/processes for cross-sector and collaborative resolution of open DCF cases

Cross-systems coalition/working group focused on supporting children and families

Prosocial activities for youth, with opportunities for parent engagement; mentors with lived experience

Safe, stable, supportive, and affordable housing

Workforce issues among youth serving and behavioral health providers

Data system for data collection, analysis, and sharing; including data on race and ethnicity

Inclusion and integration of people with lived experience

Social isolation among vulnerable children and parents

Family-centered/two-generation programming

Transparency about child welfare practices

Support for parents in understanding child development and behavior

Support services and programs for fathers; and other caregivers

# Priorities for Change

Efficient and coordinated prevention and service network

Cross-systems care coordination and support for children and parents: pre-filing; after resolution; during and after reunification

Training and education across sectors: working with vulnerable children and families and related topics

Programs/processes for cross-sector and collaborative resolution of open DCF cases

Cross-systems coalition/working group focused on supporting children and families

Prosocial activities for youth, with opportunities for parent engagement; mentors with lived experience

Safe, stable, supportive, and affordable housing

Workforce issues among youth serving and behavioral health providers

Data system for data collection, analysis, and sharing; including data on race and ethnicity

Inclusion and integration of people with lived experience

Social isolation among vulnerable children and parents

Family-centered/two-generation programming

Transparency about child welfare practices

Support for parents in understanding child development and behavior

Support services and programs for fathers; and other caregivers

# Summit: Action Planning



**Priority:** *EFFICIENT AND COORDINATED PREVENTION AND SERVICE NETWORK*

<b>Objective</b> What do we want to achieve?	<b>Activities/ Tasks</b> What do we have to do to meet the objective?	<b>Resources</b> What resources are necessary to complete the activity? Who should be at the table? Is anyone already engaged in this activity?	<b>Timeframe</b> How much time is required for the activity? When can action begin on this activity?	<b>Barriers</b> Are there any potential barriers to consider?	<b>Responsibility</b> Who will take the lead?



# Post-Summit and Moving Forward



Compile report of findings and disseminate

Locally





**ECONOMIC SUPPORTS FOR FAMILIES**

- Financial Support and Food Insufficiency*
- [Department of Transitional Assistance: Transitional Aid to Families with Dependent Children; Emergency Aid to the Elderly, Disabled, and Children; Supplemental Nutrition Assistance Program](#)
- [State Supplement Program](#)
- [Women, Infants, and Children Nutrition Program](#)
- [Enlace de Familias \(food pantry\)](#)
- [Springfield Family Resource Center](#)
- [Food Bank of Western MA](#)
- Childcare Subsidies*
- [DCF Emergency Childcare Vouchers](#)
- Housing*
- [Holyoke Housing Authority](#)
- [Springfield Housing Authority](#)
- [Department of Housing and Community Development](#)
- [Wayfinders Residential Resource Center](#), [Community Development Corporation](#), [Friends of the Homeless](#), [One Holyoke](#)
- DTA shelters, [RAFT](#), [Alianza](#)

- [Statewide Emergency Housing Assistance](#)
- [Department of Mental Health \(subsidies for adult housing and flexible funding\)](#)
- Transportation*
- [Pioneer Valley Transit Authority](#)
- [Registry of Motor Vehicles](#)
- [DCF Family Advocate through Community Connection Coalition](#)
- Education and Job Training*
- [Western Mass Network to End Homelessness](#)
- [Westover Job Corps](#)
- [Springfield Technical Community College](#)
- [Holyoke Community College](#)
- [Valley Opportunity Council](#)
- [One Can Help](#)

**HEALTHCARE**

- [Baystate Medical Center](#)
- [Holyoke Health Center](#)
- [Caring Health Center](#)
- [Baystate Family Advocacy Center](#)
- [MassHealth](#)

**CHILD WELFARE**

- [DCF Area Offices: Springfield, Holyoke, Van Wart](#)
- [DCF Legal: General Counsel, Regional Counsel, Deputy Regional Counsel](#)
- [DCF Clinical: Regional Substance Use Coordinators, Area Clinical Managers, Area Resource Coordinators, Western Regional Intensive Placement Coordinator, Clinicians, Case Managers](#)

**CHILDREN'S RESIDENTIAL**

- [Center for Human Development: Caring Together](#)
- [Key Program](#)
- [Allen Street](#)
- [Gandara](#)
- [Chicopee and Holyoke SSTAR](#)
- [The Children's Study Home](#)

**STATE AGENCIES**

- [Department of Children and Families](#)
- [Department of Public Health Substance Addiction Services](#)
- [Department of Mental Health](#)
- [Office of the Child Advocate](#)
- [Department of Youth Services](#)
- [Juvenile Detention Center](#)
- [Department of Elementary and Secondary Education](#)

**FAMILY CENTERED TREATMENT**

- [Sage House](#)
- [Institute for Health and Recovery Project, Family Recovery, Parent-Child Services, Project Square One: FIRST Steps Inside Out](#)
- [Behavioral Health Network](#)
- [Cutchins Program](#)
- [EMPOWER Program](#)
- [Center for Human Development](#)
- [Rivers](#)
- [Children's Behavioral Health](#)

**YOUTH CONNECTIONS**

- [Big Brothers Big Sisters Hampden County](#)
- [Boys and Girls Club of Greater Holyoke](#)
- [Boys and Girls Club of Greater Westfield](#)
- [YMCA: Springfield, Holyoke, Westfield](#)
- [YWCA Western Massachusetts](#)
- [Holyoke Youth Soccer](#)

**EARLY CHILDHOOD CARE AND EDUCATION**

- [Springfield Public Schools](#)
- [Holyoke Public Schools](#)
- [HCS Head Start](#)

**FAMILY DOMESTIC VIOLENCE**

- [Alianza \(Women's Shelter Compañeras\)](#)
- [DCF Regional DV Specialists](#)

**LAW ENFORCEMENT**

- [Holyoke Police: Holyoke Safe Neighborhood Program \(Family Resource Guide\)](#)
- [Springfield Police: Domestic Violence Advocate, Hub Table](#)
- [Hampden County Sheriff's Department: Springfield and Holyoke Neighborhood Watch, 6 Parent Engagement Coordinators, Youth Leadership Academy Summer Camp](#)

**BEHAVIORAL HEALTH TREATMENT**

- [Behavioral Health Network](#)
- [Center for Human Development](#)
- [Gandara](#)
- [Clinical & Support Options](#)
- [ServiceNet: Child and Adolescent](#)
- [Access to Recovery](#)

**COURT, COURT PARTNERS, AND COURT PROGRAMS**

- [Springfield Juvenile Court](#)
- [Holyoke Juvenile Court](#)
- [Pathways Initiative](#)
- [Hampden County Dually Involved Youth Program](#)
- [Hampden County DA's Office: Special Victims Unit, Trauma](#)
- [Hampden County JDAI](#)
- [Juvenile Court Clinic](#)
- [Committee for Public Counsel Services: Child and Adolescent](#)
- [Health Law Advocates: Mental Health Advocates](#)
- [Defense Counsel: Private Bar](#)

**FAMILY AND COMMUNITY RESOURCE CENTERS**

- [Enlace de Familias](#)
- [Springfield Family Resource Center](#)
- [Martin Luther King Jr. Family Services](#)
- [New North Citizens Council](#)

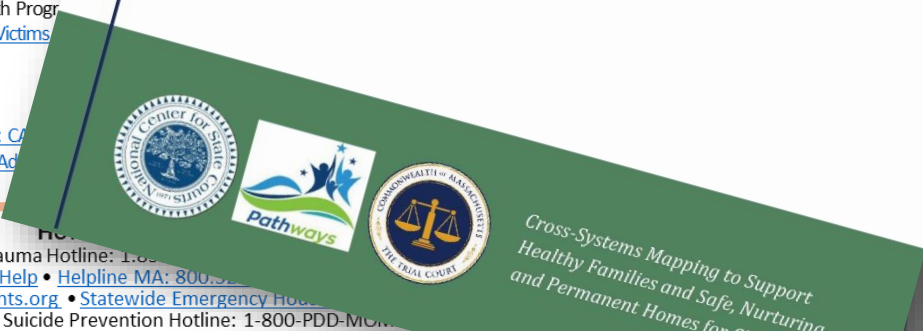
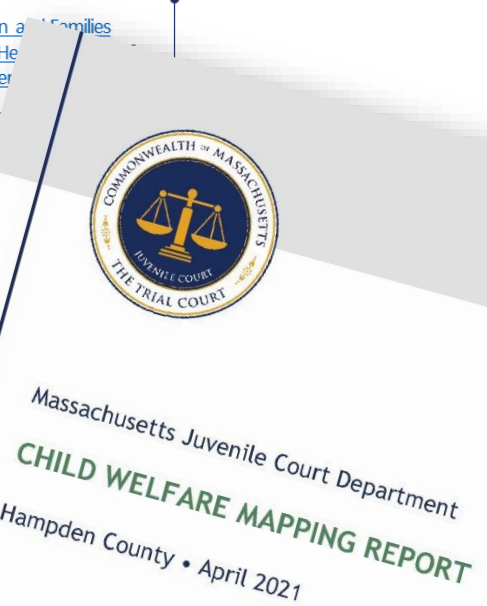
**PARENTING SKILLS TO PROMOTE HEALTHY CHILD DEVELOPMENT**

- [Holyoke Family Resource Center; Springfield Family Resource Center: Parenting Journey, Nurturing Fathers, Nurturing Families, virtual learning tutorials, Grandparents Raising Grandchildren, peer support](#)
- [Square One: Healthy Families, Parents as Teachers, Mothering from the Inside Out, FIRST Steps Together](#)
- [HCS Head Start: Holyoke Chicopee Family and Community Program, father engagement, family fun nights, cooking classes, parent volunteering opportunities](#)

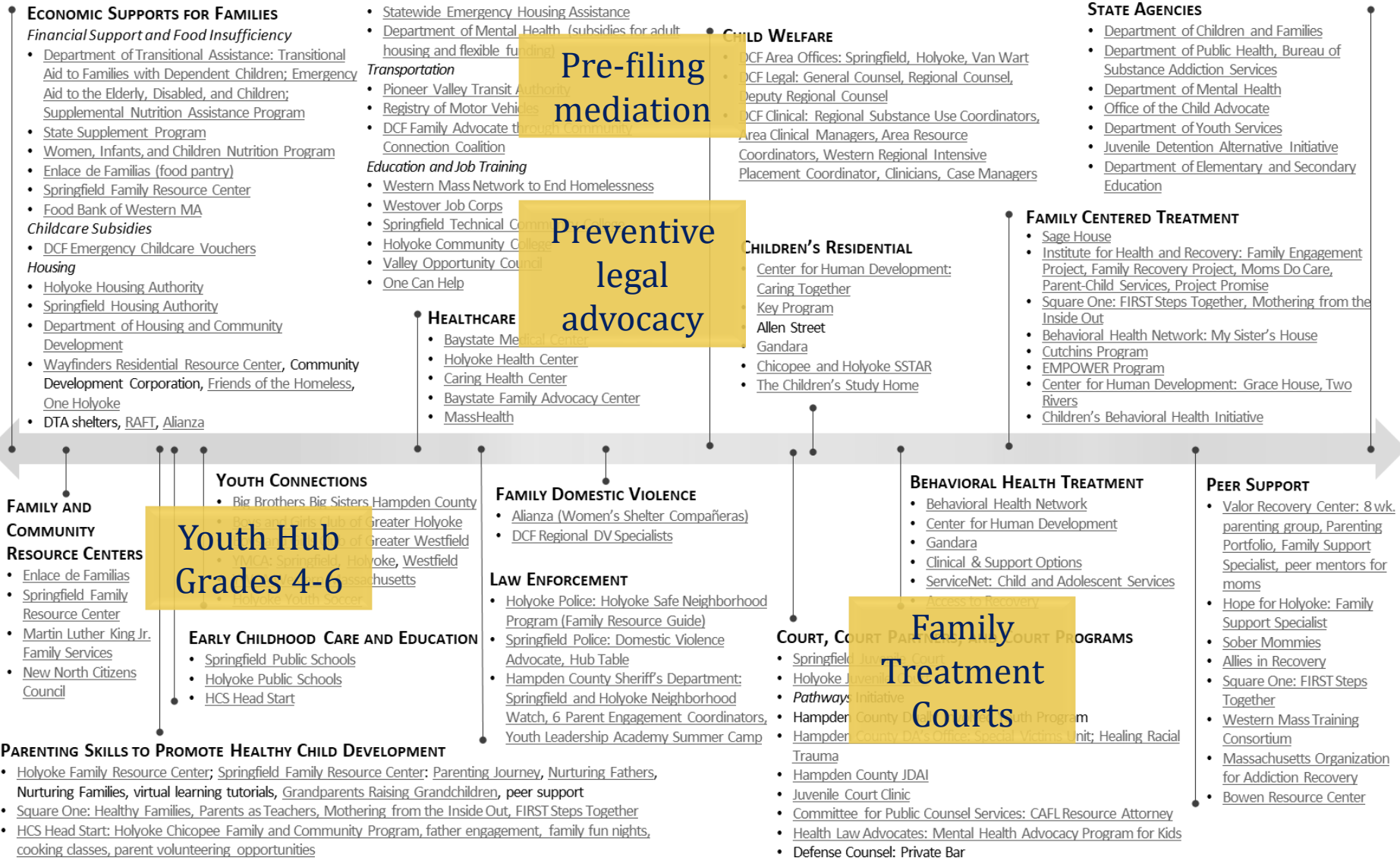
**COALITIONS/TASK FORCES**

- [JDAI](#) • [Holyoke Family Resource Center Advisory Board](#) • [City of Holyoke Food Access Committee](#) • [DCF Community Connection Coalition](#) • [Hampden County Family Recovery Council](#) • [Hampden County Perinatal Coalition](#) • [WMSAPA](#) • [Mandated Reporter Commission](#) • [DMH Law Enforcement and Mental Health Meeting in Northampton](#) • [Holyoke Safe Neighborhood Initiative](#) • [Pioneer Valley Restorative Justice for Youth](#) • [Hampden County Addiction Task Force](#)

- [413 Cares](#) • [MA Child Trauma Hotline: 1-800-352-8888](#) • [800-792-5200](#) • [Look4Help](#) • [Helpline MA: 800-352-8888](#) • [ParentsHelpingParents.org](#) • [Statewide Emergency Housing Helpline: 1-800-352-8888](#) • [866.584.0653](#) • [Suicide Prevention Hotline: 1-800-PDD-MONITOR](#)



PRIMARY PREVENTION    SECONDARY PREVENTION    INTERVENTION    CRISIS INTERVENTION    TREATMENT    AFTERCARE



# Post-Summit and Moving Forward



Locally

Compile report and disseminate

Continue convening regular meetings to maintain momentum from summit and continue planning

Provide technical assistance

Secure resources to staff project

Implement mappings in counties across the state

Statewide





**Chief Justice Amy Nechtem**  
Juvenile Court Department  
Massachusetts Trial Court

**Shana Cashman, Esq.**  
Administrative Office of the Juvenile Court  
[shana.cashman@jud.state.ma.us](mailto:shana.cashman@jud.state.ma.us)

**Marisa Hebble, MPH**  
Executive Office of the Trial Court  
[marisa.hebble@jud.state.ma.us](mailto:marisa.hebble@jud.state.ma.us)

Thank  
you

